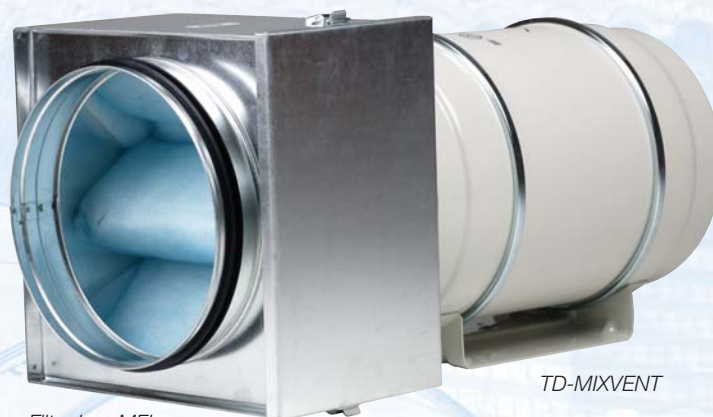


MIXVENT FILTER System (MIXVENT-TD + MBE heater battery)

The MIXVENT HEATING system consists on a MFL filtration box installed on the inlet side of the MIXVENT-TD fan and are used when the installation requires supplying filtered clean air. MFL filtration boxes are of EU4 grade filtration and are designed for direct connection with standard circular ducting.



Filter box MFL

TD-MIXVENT



A usual application of MFL filtration boxes is to protect the electrical heater batteries from the dirt, in installations where MIXVENT HEATING system is used.

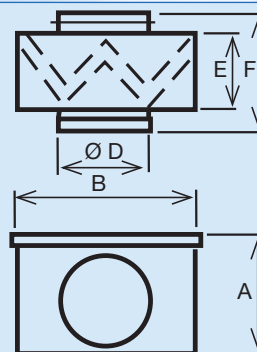


0 026182 603075



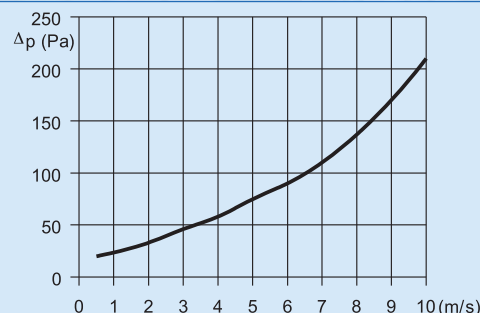
The MFL filtration boxes are supplied with a cover easily removable to replace the filter.

Dimensions (mm)



Model	A	B	D	E	F
MFL-100	200	200	100	160	196
MFL-125	200	200	125	160	196
MFL-160	200	200	160	154	196
MFL-200	243	244	200	154	202
MFL-250	293	294	250	154	206
MFL-315	342	343	315	154	206
MFL-355	447	448	355	154	254
MFL-400	447	448	400	154	254

Pressure drop of the filter boxes Δp (Pa)



TD-MIXVENT Installation accessories

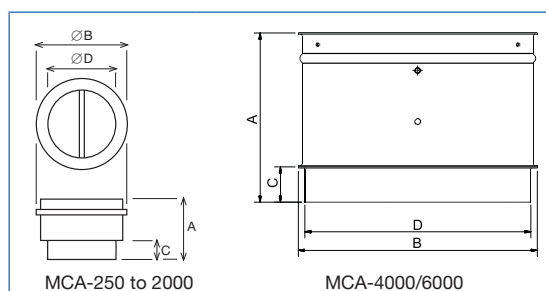
■ Specific accessories for TD Series



MCA

Back-draft shutters mounted at the outlet of the fans, to prevent external air entry and to limit heat leakage, when the fan are not in use. To apply with TD, TDx2, TDx3 and TWIN models.

Model MCA/JCA	Type of TD - TDx2 - TDx3 - TWIN
MCA - 250	160/100N - 250/100
MCA - 350	350/125
MCA - 500/150	500/150
MCA - 500/160	500/160
MCA - 800	800/200 - 800/200N
MCA - 1000	1000/250 - 1300/250
MCA - 2000	2000/315
MCA - 4000	4000/355
MCA - 6000	6000/400



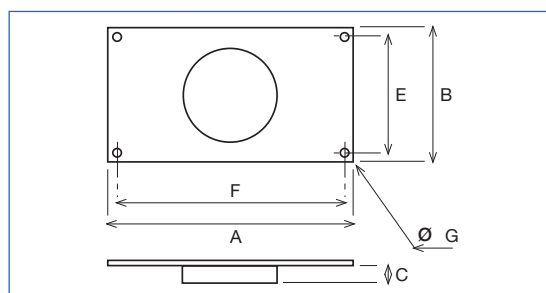
Model MCA	A	Ø B	C	Ø D
MCA - 250	107	111	31,5	94,5
MCA - 350	107	136	31,5	119,5
MCA - 500/150	121	163,5	35	147
MCA - 500/160	121	173,5	35	157
MCA - 800	131,5	214	35	197,5
MCA - 1000	164	264,5	42	248
MCA - 2000	205	330	50	312
MCA - 4000	265	374	55	354
MCA - 6000	307	419	65	399



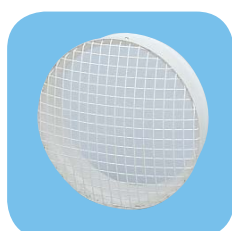
MAR

Rectangular Duct Adapters enable TD, TDx2 and TDx3 to be connected to rectangular ducting.

Model MAR	Type of TD-TDx2-TDx3	Nominal dim. of ducting L x H
MAR - 250	160/100N - 250/100	224 x 140
MAR - 350	350/125	224 x 140
MAR - 500/150	500/150	280 x 180
MAR - 500/160	500/160	280 x 180
MAR - 800	800/200-800/200N	315 x 200
MAR - 1000	1000/250-1300/250	400 x 250
MAR - 2000	2000/315	500 X 315



Model MAR	A	B	C	E	F	Ø G
MAR - 250	264	180	33,3	160	244	9
MAR - 350	264	180	33,5	160	244	9
MAR - 500/150	320	220	37	200	300	9
MAR - 500/160	320	220	37	200	300	9
MAR - 800	355	240	37	220	335	9
MAR - 1000	440	290	42	270	420	9
MAR - 2000	540	355	52	355	520	9



MRJ

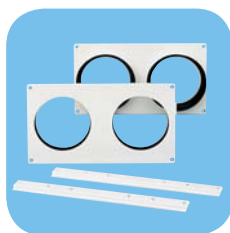
Grilles mounted at the inlet or outlet of the fan, to prevent the entry of any foreign objects that could damage the fan. To apply with TD, TD x 2, TD x 3 and TWIN models.

Model MRJ	Type of TD - TDx2 - TDx3 - TWIN
MRJ - 250	160/100N - 250/100
MRJ - 350	350/125
MRJ - 500/150	500/150
MRJ - 500/160	500/160
MRJ - 800	800/200 - 800/200N
MRJ - 1000	1000/250 - 1300/250
MRJ - 2000	2000/315
MRJ - 4000	4000/355
MRJ - 6000	6000/400



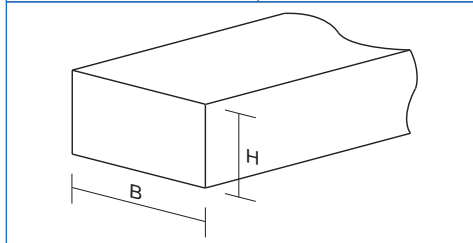
MBR
Flanges allowing the coupling of TD fans in series.

Model MBR	Ø of the duct
MBR-350	125
MBR-500/150	150
MBR-500/160	160
MBR-800	200
MBR-1000	250
MBR-2000	315

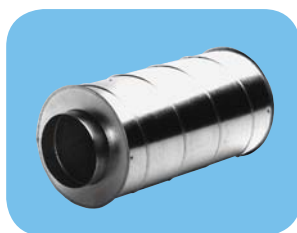


KIT TWIN BASE
This accessory consists of two rectangular duct couplings with standardized dimensions and two supports allowing mounting two TD or two TDx2 fans in parallel.

Model MAR	Dimensions (mm)		Nominal dim. of rectangular duct (mm)	
	L	H	L	H
KIT TWIN BASE 250	320	180	280	140
KIT TWIN BASE 350	320	180	280	140
KIT TWIN BASE 500/150	395	220	355	180
KIT TWIN BASE 500/160	395	220	355	180
KIT TWIN BASE 800	440	240	400	200
KIT TWIN BASE 1000	540	290	500	250
KIT TWIN BASE 2000	690	355	630	315

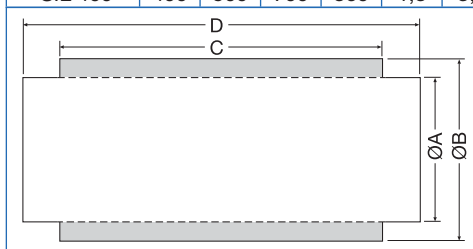


Due to the independent operation of TD models, backdraft shutters mounted at the outlet of TD fans are required in order to avoid the backdraft of air when the fan is disconnected.



SIL
Sound attenuators

Model	ØA (mm)	ØB (mm)	C (mm)	D (mm)	Attenuation in dB							
					63	125	250	500	1000	2000	4000	8000
SIL 125	125	250	700	900	2	5	13	21	37	37	31	9
SIL 160	160	250	700	900	2	9	14	23	25	16	11	6
SIL 200	200	315	700	900	2	8	11	23	25	17	9	4
SIL 250	250	355	700	900	2	6	10	19	25	16	7	3
SIL 315	315	400	700	860	2	2,2	3,3	9	21,2	7,6	4,1	5,5
SIL 355	355	450	700	860	3,7	4,1	6,7	13,2	14,3	3,4	8,1	7
SIL 400	400	500	700	860	1,8	3,1	4	9,5	13,7	5,6	0,4	5,9



SIL sound attenuator mounted together with a TD-MIXVENT, a filter box MFL and a heat electrical battery MBE

■ General installation accessories



GSA
Flexible aluminium
ducting



GSI
Flexible acoustic
ducting



CX
Worm drive clips



PER-W
Outdoor plastic louvre
shutters



BOC
Circular air valves



RED
Reducer



MRT
Joining pieces



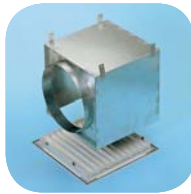
CT
Roof terminal kits



GRA
Aluminium external
grilles



GRI
Internal extract grilles



RP
Terminal connectors for
GRI internal grilles



GCI
Interior circular grilles

■ Electrical accessories



REGUL 2
2 Speed switch



REB
Single-phase electronic
speed controller



RMB
Single-phase
auto-transformer speed
controller

